

Message from Jeff Sachs



Real Video (12:14)

Quicktime Video (12:14)

In this video, Jeff discusses the Earth Institute's role in poverty reduction around the world, focusing on important Earth Institute activities such as the upcoming [State of the Planet Conference](#) on March 29-30.

"This is our major flagship event, and part of Columbia's 250th celebration. I hope you can come join the debates, the discussions, and help make this an incredible and vibrant conference," says Jeff.

"At the closing of this conference, we will work out a consensus statement showing that there is agreement among leading scientists on many aspects of the complicated problems of water, energy, food, and health, and that science and technology can make a very serious and important contribution to improving the lives — indeed sustaining the lives — of the world's poorest people."

Another aspect of the Earth Institute's work on poverty reduction is work with the UN Millennium Project, which is directed by Jeff. In February, a number of task force leaders, including Earth Institute experts Pedro Sanchez, Elliot Sclar, Roberto Lenton, John McArthur and others travelled with Jeff to four countries in Africa: Senegal, Ghana, Kenya and Ethiopia.

"We met with government leaders, donors, representatives of civil society, and representatives of UN agencies, to discuss ways to make practical, large steps forward in disease control, hunger alleviation and income generation in these countries," Jeff says.

"These activities really bring the best of our knowledge to bear on many of the world's most pressing problems."

In the News

The Wall Street Journal - March 3, 2004

Lloyd Burckle of the Lamont-Doherty Earth Observatory and Henri Grissino-Mayer of the Laboratory of Tree Ring Science, University of Tennessee, have proposed an alternate hypothesis as to why instruments crafted in the late 17th and early 18th centuries are tonally superior to modern instruments -- climate.

The Columbia Spectator -- March 3, 2004

This article describes the combined work of the UN Millennium Project and the Earth Institute, and includes interviews with several Earth Institute experts.

USA Today -- February 26, 2004

Forbes -- February 26, 2004

In this article on a method of waste-to-energy recycling called "plasma torch technology," Klaus Lackner, Ewing Worzel Professor of Geophysics at the Department of Earth and Environmental Engineering, is quoted.

Accra Mail, Ghana -- February 16, 2004

Ghana Web -- February 12, 2004

At a meeting in Accra, Ghana, Jeffrey Sachs and a team of 15 members of the The Millennium Project Task Forces, some of whom are experts from the Earth Institute, discussed poverty reduction strategies aimed at achieving the UN Millennium Development Goals by 2015.

[more recently in the media](#)



Rob Garris (above, left), Associate Dean at the School of International and Public Affairs, answers questions about the Ph.D. program in Sustainable Development, a new Earth Institute education initiative. Columbia University mandated that the Earth Institute break new ground in educational programs devoted to sustainable development, and over 200 attendees came to the first Earth Institute Environmental Open House to express interest in a variety of its sustainable development and

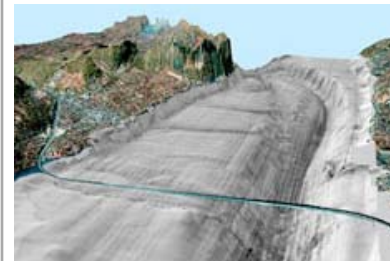


State of the Planet Conference To Focus on Poverty

Brings innovative and influential science and policy experts to discuss energy, food, water, and health in relation to sustainable development

Working to link global decision-making to the best of sustainability science, the Earth Institute at Columbia University will convene the third biennial State of the Planet conference on March 29-30, 2004. The conference will bring together an international roster of influential and innovative thinkers on issues critical to the well-being of the Earth and its inhabitants — specifically energy, food, water, and health.

State of the Planet 2004 will generate recommendations on the best scientific options, and most urgent areas for investment to ensure delivery of basic needs such as water, energy, health, and nutrition to all the world's people. These recommendations will be presented to leading policymakers, including those involved in the G8 summit meeting scheduled for June 2004. [more](#)



A three-dimensional image of the bottom of the Hudson River Estuary, New York, extending from Tappan Zee to Croton Point.

Hudson River Estuary Enters Middle Age

History of sediment accumulation points to a new phase in the formation of the lower Hudson River

The Hudson River Estuary, a stretch of the Hudson River from Troy, N.Y. to its mouth in New York Harbor,



NASA and Columbia University Find Common Research Areas in Sustainable Development

A one-day workshop hosted by Earth Institute and Columbia scientists explored research areas NASA has developed to sustain human life during long space missions — research that could prove life-saving to populations with no access to potable water, proper drainage or sewage systems. The workshop was organized by Roberto Lenton, who is a senior adviser to the International Research Institute on Climate Prediction (IRI) and co-chair of the UN Millennium Project Task Force on Water and Sanitation. [more](#)



Earth Institute Fights Poverty Worldwide

Scientists target hunger, malaria, economic development

Directed by Earth Institute economists Nirupam Bajpai and Jeffrey Sachs, the Gujarat project, based at the Center on Globalization and Sustainable Development, is just one example of how harnessing science to fight global poverty lies at the core of the Earth Institute at Columbia University. In the Indian State of Gujarat, scientists from the Earth Institute have been working at the juncture of science and economic development: seismology and disaster management strategies, seasonal and inter-annual climate prediction as it affects agriculture, and water resource management are three topics of research. Climate and earthquake experts are working together with economists to develop strategies to reduce poverty in the state, attract foreign direct investment, and promote labor-intensive manufacturing exports. [more](#)

environmental programs. The open house featured 26 academic programs affiliated with the Earth Institute. Thirty-five representatives from around the Earth Institute and Columbia University were on hand to answer questions. [more](#)

M.A in Climate and Society Will Train Professionals and Academics on Climate Change

Application Deadline For Fall 2004 is March 15

The new twelve-month M.A. Program in Climate and Society will train professionals and academics to understand and cope with the impacts of climate variability and climate change on society and the environment. This rigorous program emphasizes the problems of developing societies. The deadline for applications is March 15, 2004.

The M.A. in Climate and Society management team consists of Mark Cane, Director; David Downie, Associate Director; and Abigail Schade, Assistant Director. [more](#)



Olafur Ragnar Grímsson, President of Iceland, at the Explorer's Club

Earth Institute Experts and President of Iceland Discuss Changing Polar Environments

Meeting Focuses on Global Impacts

The polar environments are undergoing dramatic changes, from decreased sea ice cover in the Arctic to collapsing ice shelves in Antarctica. To foster discussion on these changes, and in preparation for the planning of the International Polar Year (IPY) 2007-08, Jeffrey Sachs, director of the Earth Institute held a meeting of polar experts that was presided over by Ólafur Ragnar Grímsson, President of Iceland, on Arctic and Antarctic issues that have both local and global impacts. [more](#)

has begun a new stage of its life, say geologists at the Lamont-Doherty Earth Observatory and Queens College in Flushing, N.Y. Researchers at both institutions have found that, aside from a few very specific locations, the estuary may have largely stopped filling in with new sediment. [more](#)

Grants and Awards

The Ford Foundation donated \$150,000 in support of work on sexual and reproductive health in the Millennium Development Goals, bringing the total consortium donation in support of work on sexual and reproductive health to \$900,000. Other donors in this consortium include the Packard Foundation and the Hewlett Foundation.

Dr. Stephen Leeder, research scientist at the Center for Global Health and Economic Development, received \$50,000 for phase II of his project MacroCardioHealth in Developing Countries from **the Global Forum for Health Research (WHO)**.

The Canadian International Development Agency (CIDA) donated \$75,800 to the Earth Institute in support of the Hunger Task Force, part of the Millennium Development Goals.

The National Oceanic and Atmospheric Administration (NOAA) donated \$192,000 to a GISS project directed by Francesco Tubiello and Cynthia Rosenzweig, both research scientists at GISS.

DEES Professorship Awarded to Expert on the Earth's Crust

Peter Kelemen has been appointed the new Arthur D. Storke Memorial Professor at the Department of Earth and Environmental Sciences (DEES). Professor Kelemen is currently a senior scientist at the Woods Hole Oceanographic Institution, and will arrive at DEES this summer. Kelemen's primary research interest is in the genesis and evolution of the Earth's crust in the ocean basins, in arcs, and in continents. [more](#)

Comments and Suggestions

Contact our [editor](#)

Past issues